

Climate Neutral Gävle by 2030

EU GREEN COP1, Angers, 7th of October 2025

Annika Lundqvist,
Head of International Office,
Gävle municipality

Gävle - Key Facts



- **Founded in 1446**, situated by the Baltic Sea, 170 km north of Stockholm
- **Population** – 104 000 inhabitants
- **Capital city of Region Gävleborg** – administrative, economic and educational centre
- **Logistic Hub** – Port of Gävle, largest container terminal on the east coast of Sweden, strong rail and road connections, Arlanda International airport one hour away
- **Economy** – Strong industrial base in forestry, wood, paper and pulp, complemented by SMEs in services, trade, logistics, energy and more.
- **University of Gävle** – contributes to the development of Gävle & Gävleborg region – education and research, addressing today's major societal challenges.

Municipal goals and strategies

- Substantially improved results in Gävle's schools
- Safety, social cohesion and reliable welfare throughout the municipality
- Significantly improved business climate
- Modern urban planning that meets the needs of current and future generations
- **Climate Neutral municipality**

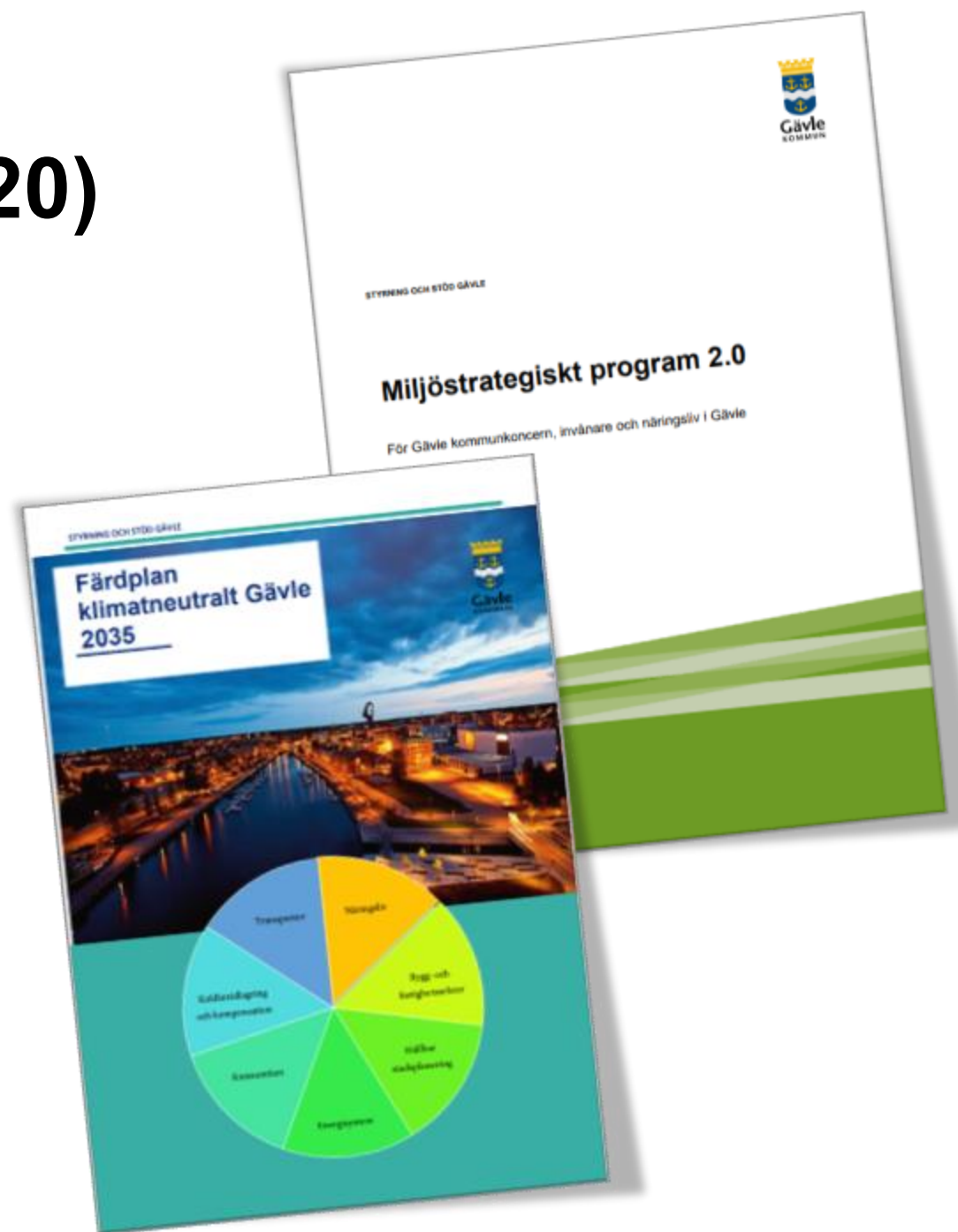


Sustainability program (2020)

Sets our goals for climate, water, biodiversity, circularity and chemicals. The goal for carbon neutrality is set to 2035, both for territorial and consumption-based emissions.

Climate Action Plan (2022)

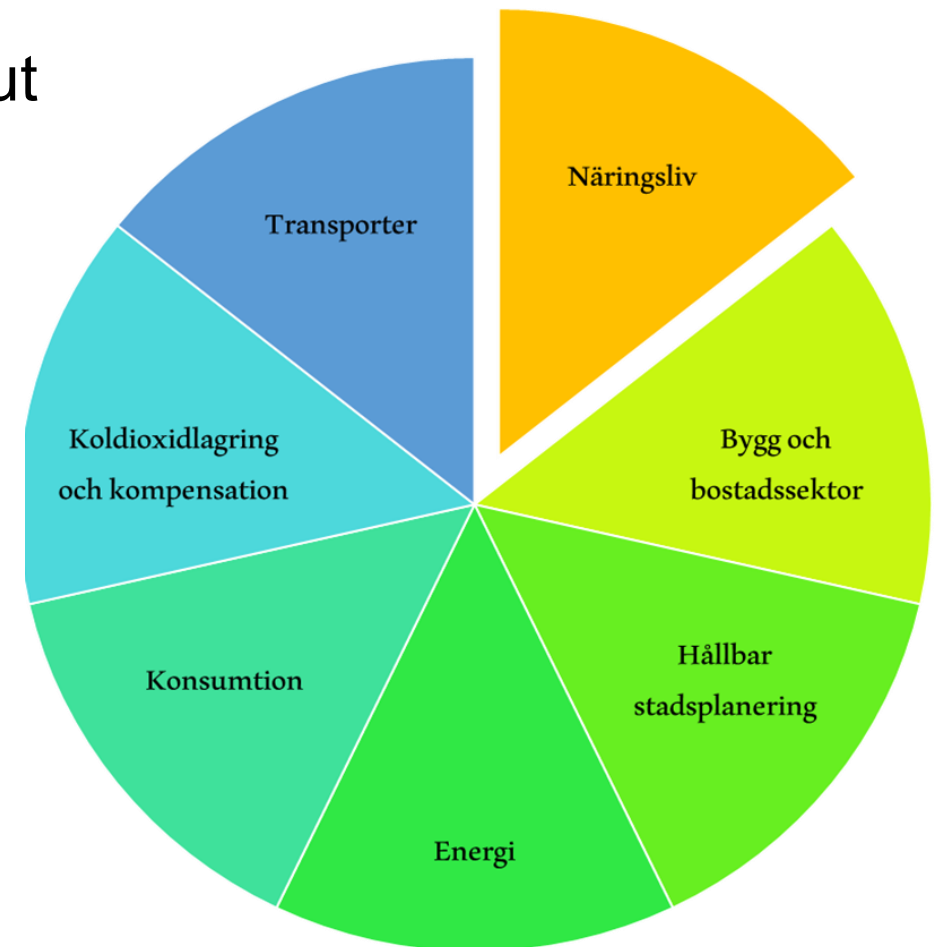
Defines the necessary actions to reach a climate neutral municipality in 2035



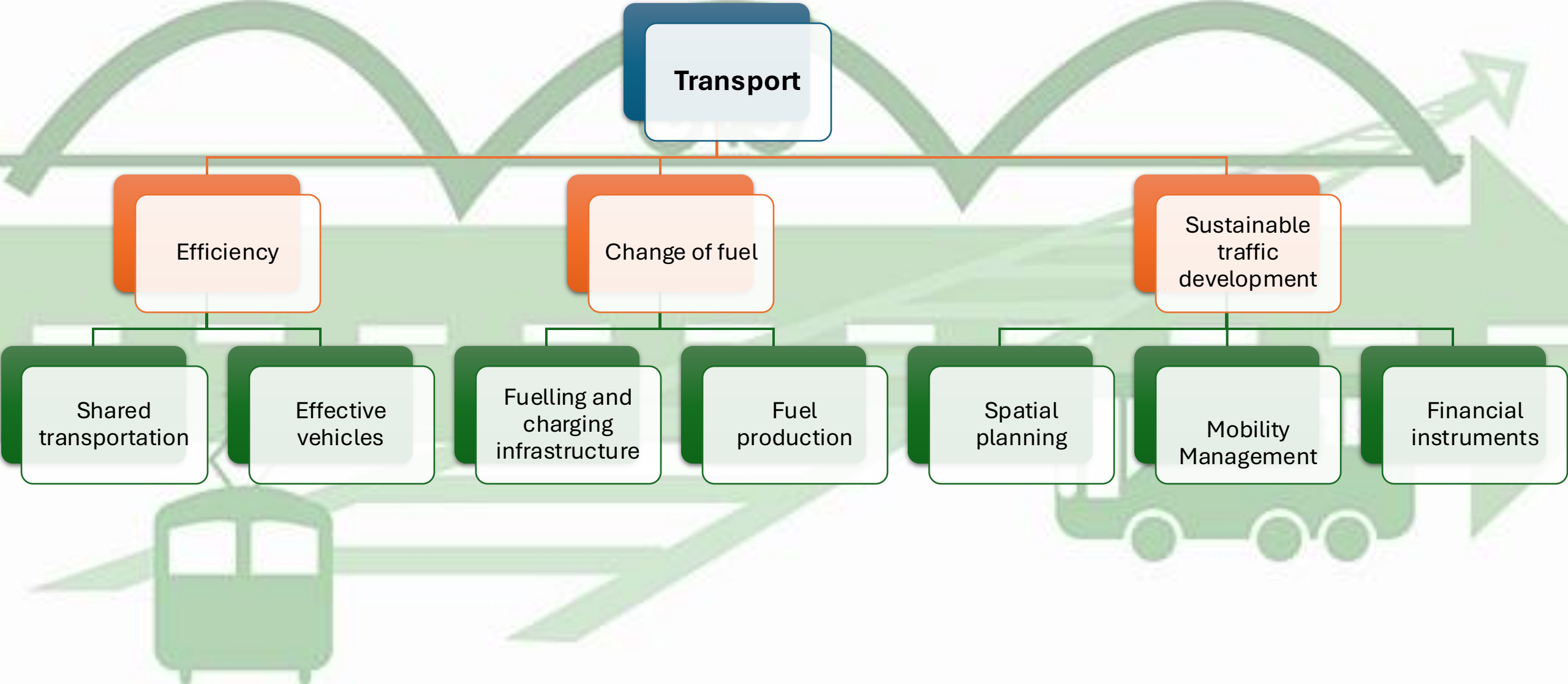
Gävle Climate Action Plan

Not developed out of our emissions profile but from our mandate to act in certain areas:

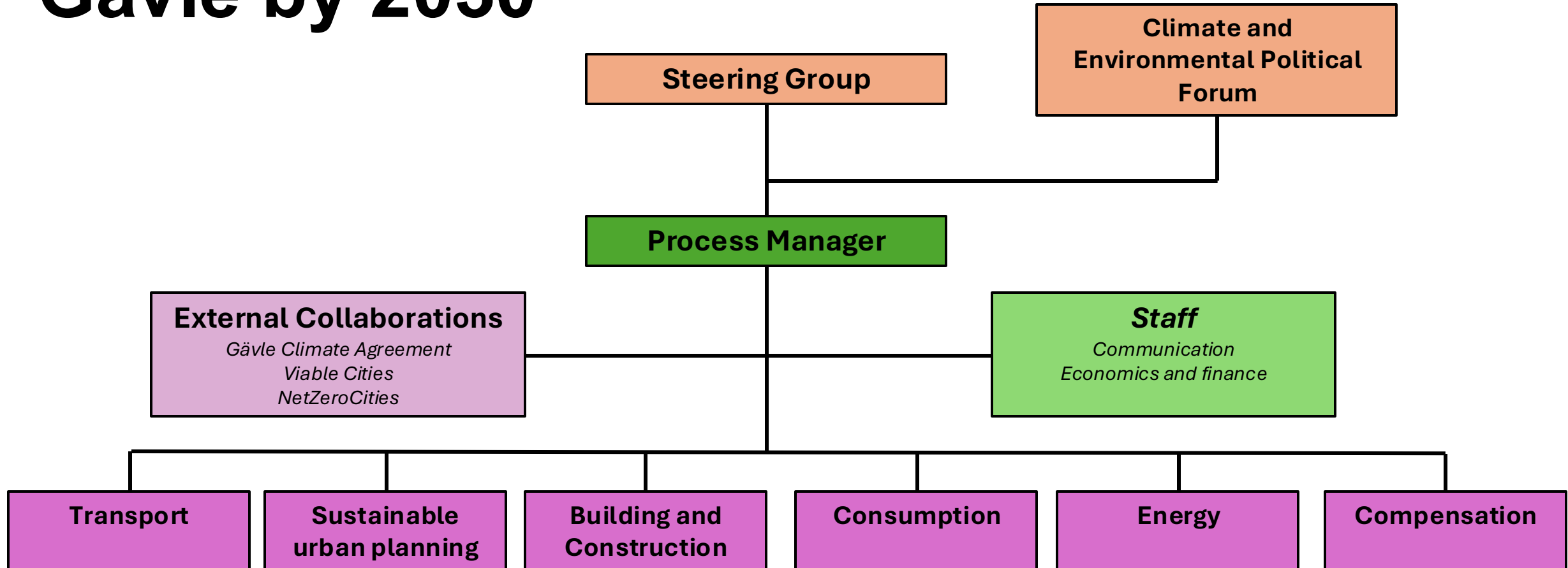
- Transport
- Business
- Construction and housing sector
- Sustainable spatial planning
- Energy
- Consumption
- Carbon capture and storage



Each area has its own transition map



Organisation – Climate Neutral Gävle by 2030



#EUmissions
#HorizonEU
#MissionCities




A collaborative arena for climate-driven business
and operational development at local level



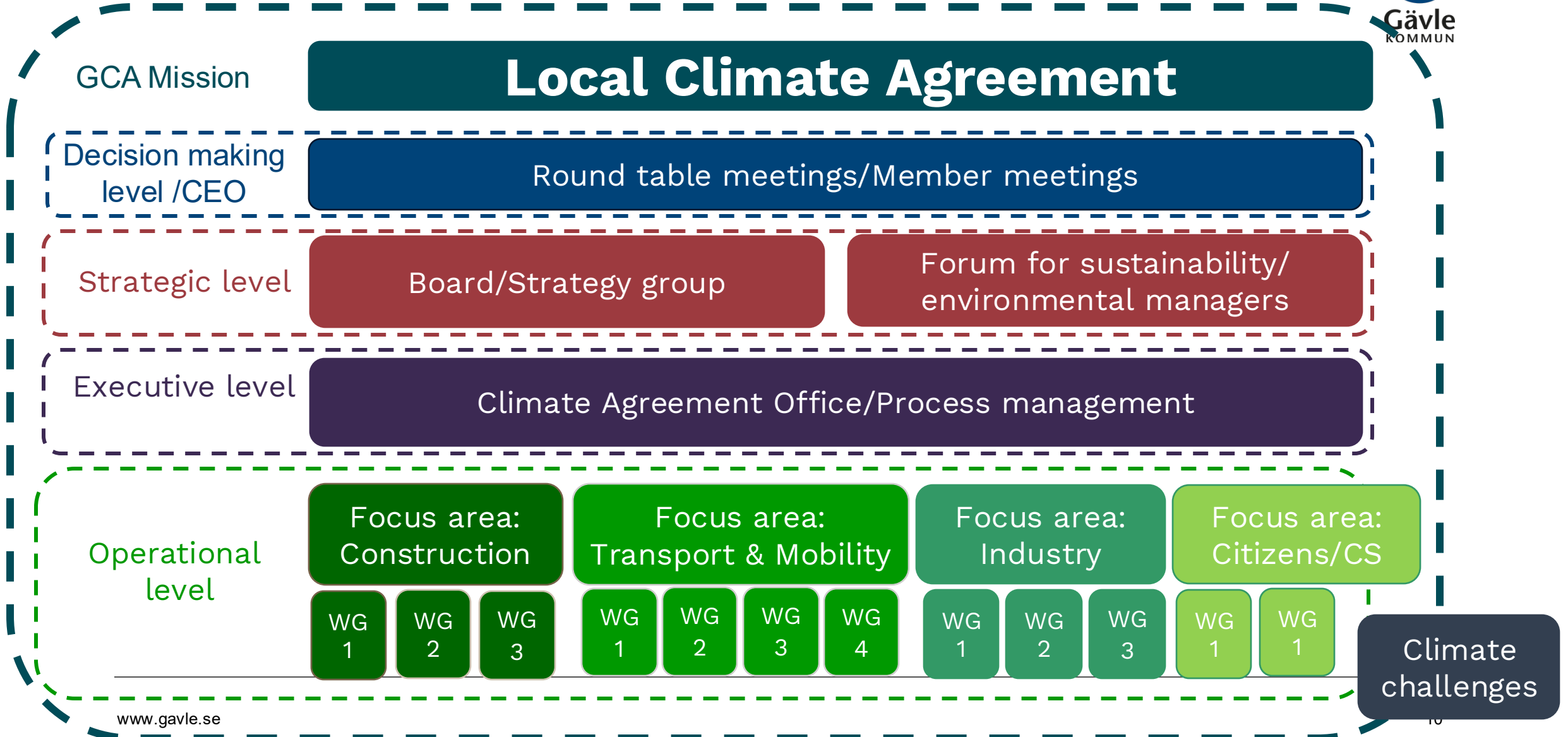
Funded by
the European Union



How we built the Arena

Create mandate	Learn from others	Stakeholder mapping	Individual contact	Building the ecosystem	Move forward together and individually
<p>It is important to have politics with us at the very earliest stage. Get them on board!</p> <p>Anchor internally – coordinate/sync with the business office</p> <p>Involve the Communication department.</p>	<p>Take inspiration and engage with other initiatives.</p> 	<p>Who are the large emitters?</p> <p>Who are the enablers?</p> <p>Who has the knowledge?</p>	<p>Personal engagement</p> <p>What's in it for them?</p> <p>Find forerunners to build upon.</p>	<p>Everything does not have to be in place, there is great value in letting the actors be involved in shaping the initiative.</p> <p>Spread the sense of ownership! It is not your platform/arena, but the participants' Platform.</p> <p>Get some areas/activities up and running quickly and create early wins for the initiative – this creates a feeling that things are happening</p>	<p>Members commit to:</p> <ul style="list-style-type: none"> - map, annually follow up and report our greenhouse gas emissions for operations within Gävle municipality. - draw up an action plan to reduce our climate impact, - speed up climate-driven business and operational development in Gävle. - actively participate in the joint work of the climate agreement. - if possible take leadership in areas where our organization has high competence

Gävle Climate Agreement working method





Gävle Climate Agreement 1st Signatory Ceremony

External funding



A total of 15 million SEK of external funding received to develop Gävle Climate Agreement – so far...

- 6 million SEK from the EU to reduce emissions from heavy duty traffic. In the project we work together with the University of Lund to model the future need of effect for charging infrastructure.
- 9 million SEK from the Swedish Energy Agency to a project where we work together with the University of Gävle to implement a Citizens Council on Mobility (spring 2026).

Cooperation with University of Gävle



Gävle Climate Agreement



Partners in Gävle Climate Agreement.

Collaborating within the national innovation programme, Viable Cities, to develop the focus area Citizens/Civil Society (Gävle Climate Agreement) and implement a Citizens Council on Mobility (spring 2026).



Central Baltic Programme

Cycle4Climate

Cycle4Climate is testing and evaluating methods to increase cycling and will create a toolbox of effective and feasible measures for urban planners and policy makers.



Contributes to Gävle's participation in the EU Cities Mission on Climate Neutral and Smart Cities – Net Zero Cities.

Do you want to find out more, have questions or ideas of collaboration?



Please, get in touch! 😊

evelina.loberg@gavle.se

+46704140749

erik.apel@gavle.se

+46739201332

annika.lundqvist@gavle.se

+46768033160

- [Klimatneutral kommun 2030 – Gävle kommun](#)
- gavle.se/klimatavtal

