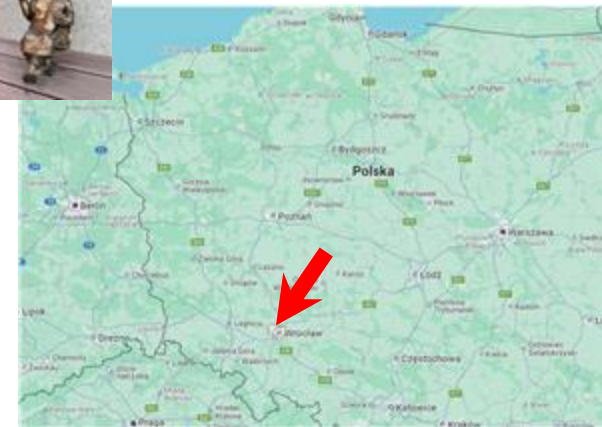
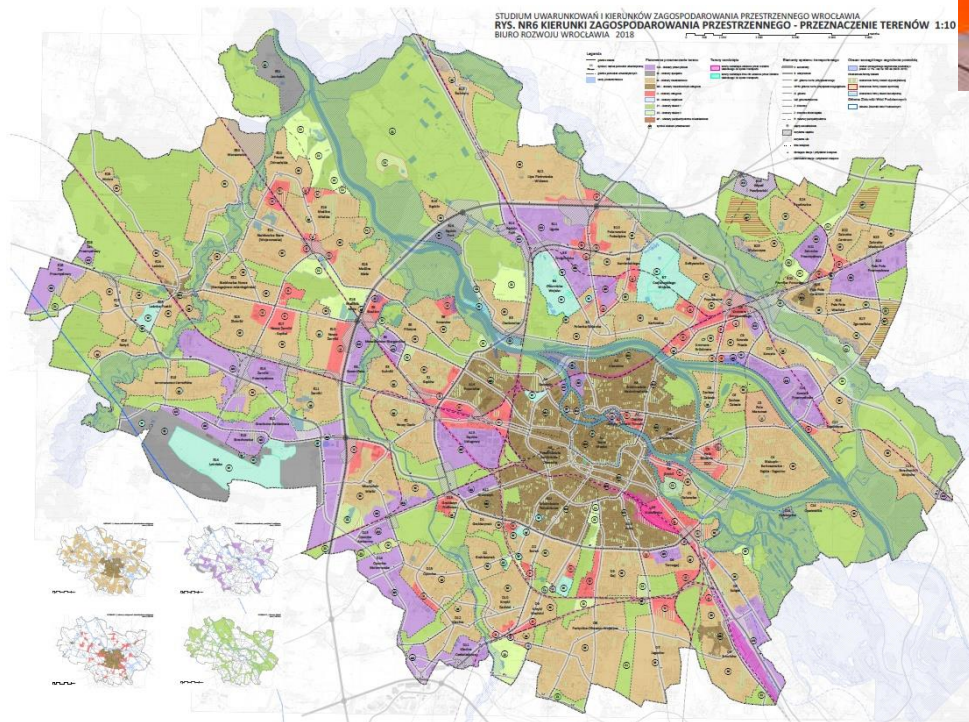


Wroclaw projects and cooperation

Malgorzata Bartyna-Zielinska



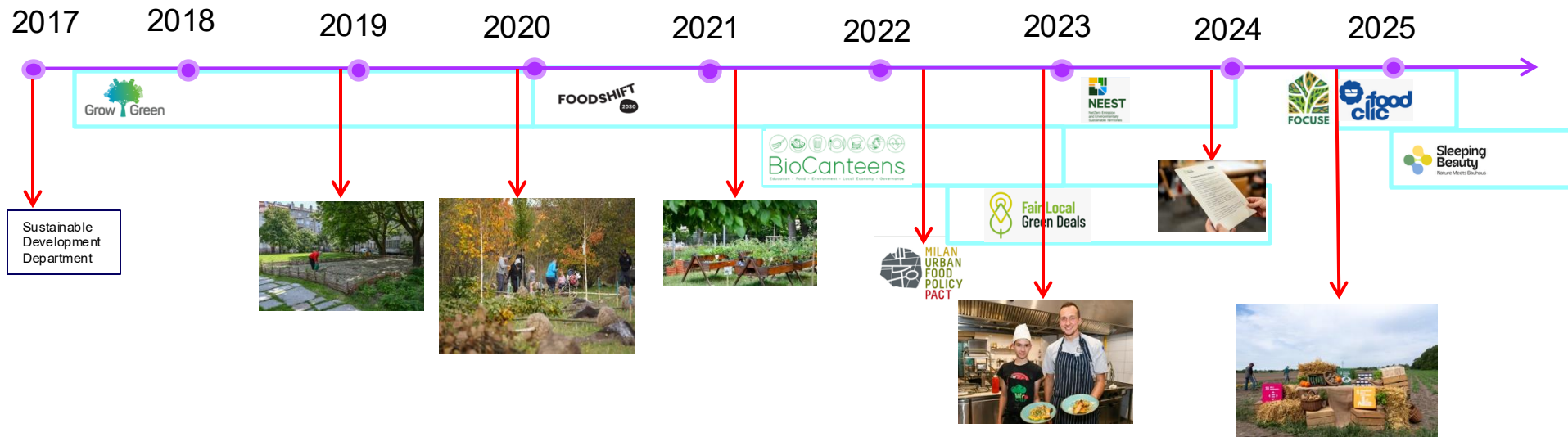
About Wrocław



Cooperation



Past projects





Investments – Nowy Targ Square

- costs: 2442 000 €
- period: 2023 – 2024
- unsealing the concrete surface, constructing insulation and drainage layers (green roof system)
- planting over 63,000 plants, including 172 trees, perennials, grasses, and climbing plants



Nowy Targ Square before reconstruction



Nowy Targ Square after reconstruction



Wroclaw Food Manifesto

is a social initiative that sets out a vision for a resilient and sustainable food system for the city and declares the commitment of residents and institutions to food security. The manifesto was created as part of the Fair Local Green Deals project and expresses concern for Wrocław's food system, as well as solidarity with other residents in the face of threats to this system.

On-going projects



Use of remote sensing for management of blue-green infrastructure in the process of city adaptation to climate change



Funded by
the European Union



NATIONAL FUND
FOR ENVIRONMENTAL PROTECTION
AND WATER MANAGEMENT



**Sleeping
Beauty**
Nature Meets Bauhaus

Interreg
CENTRAL EUROPE



Co-funded by
the European Union

URBIO BAUHAUS



European Union not the financing authority can be held responsible for them:
author(s) only and do not necessarily reflect those of the European Union or REA. Neither the
financed by the European Union. Views and opinions expressed are however those of the



FoodCLIC project

- *'Strengthening Food Security via Food Production Environments in and around Cities.'*

LIFECOOLCITY IN A NUTSHELL



CLIMATE CHANGE AND ITS IMPACT ON CITIES

One of the main problems
of cities is anthropogenic climate change.

EUROPE

is one of the most urbanized parts of the world.

It is estimated that
80%
of Europe's population
will live in urban areas
by the middle of this century.

We know how important it is to work on adapting
cities to climate change. So let's take action! Today,
because tomorrow may be too late.



ADAPTATION TO CLIMATE CHANGE IN CITY

The main objective of the LifeCoolCity Project is to support
cities in enhancing their climate change adaptation potential.

Factors building a city's adaptation potential:



LAND
SEALING



URBAN
HEAT ISLAND



THE STATE OF BLUE
INFRASTRUCTURE



THE STATE OF GREEN
INFRASTRUCTURE



THE STATE
OF BIODIVERSITY



NATURE-BASED SOLUTIONS (NBS)

We focus on small, low-cost and common solutions
that are feasible to implement for any city.



NBS-related activities use and enhance the
potential of nature to improve the quality
of life, increase resilience to climate change
and promote sustainable development.



Ecosystem services are the positive effects
of nature that bring a variety of benefits.
The city can benefit from the implementation
and application of nature-based solutions.



RANKING OF EUROPEAN CITIES

Thanks to satellite technology, we can gather periodic
and comprehensive data from across Europe and
diagnose the urban environment in European cities.

We are able to compare cities
with each other and draw conclusions.



INTERVENTION OF IMPLEMENTATION OF BLUE-GREEN INFRASTRUCTURE IN THE CITY

We analyze the city area precisely and develop a strategy for adaptation
measures and evaluate the effectiveness of its implementation.
We use the Decision Support System.



LET'S HEAD TOWARDS GREEN CITIES TOGETHER

Our strategic goal is to improve urban living conditions by
providing city managers and residents with tools to support
city management on climate change adaptation.

We hope cities will grow green
and resilient to climate change



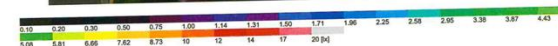
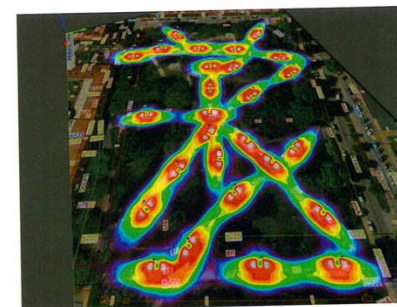


Interreg
CENTRAL EUROPE

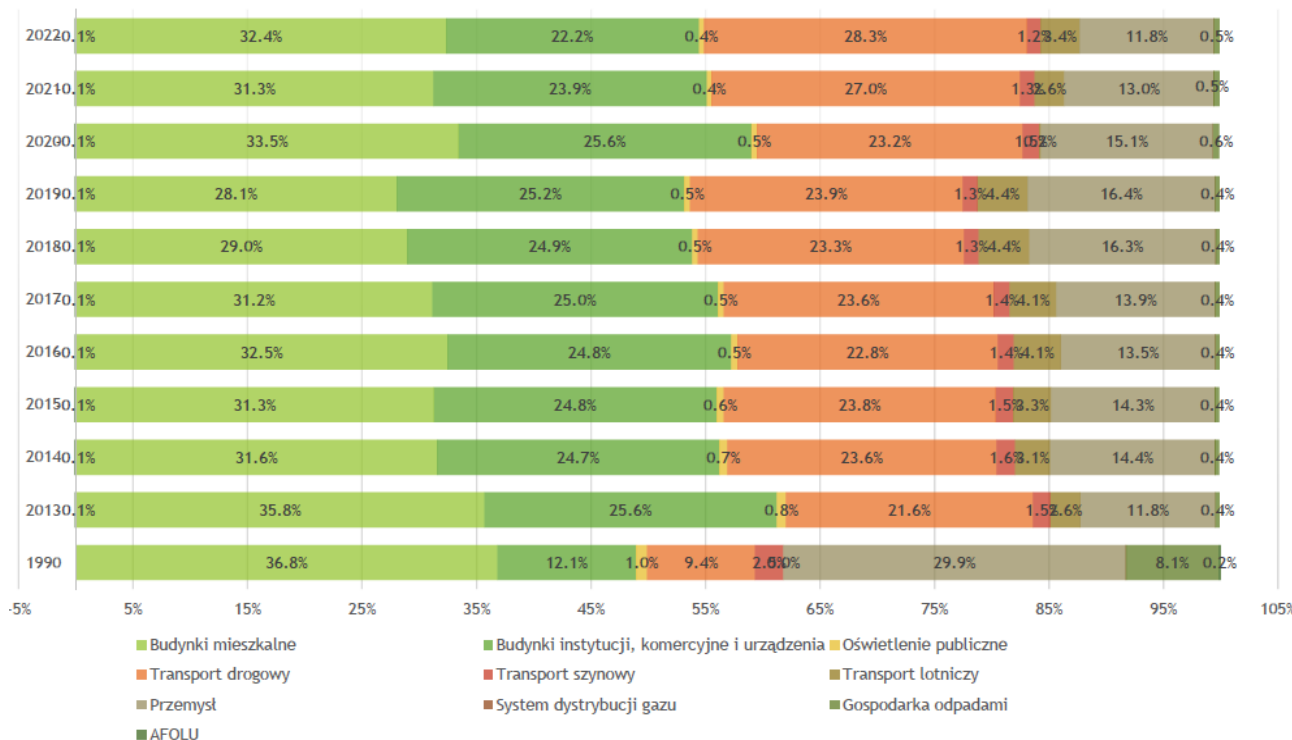


Co-funded by
the European Union

URBIO BAUHAUS



Structure of greenhouse gas emissions



The largest emissions come from the construction sector, that is, energy use in buildings.

On the scale of Wrocław, this is about 55% of emissions.

These emissions also include those from electricity and heat production.

The transportation sector is also of great importance (about 31%).

The direct impact of local government about 7%.

Partners are responsible for 93% of emissions within the city

We emit (2022) - 4,581,138 t CO₂e.

We need to reduce (80% - 2030 ...) - 3,664,911 t CO₂e

What we have already planned - 948,868 t CO₂e

How much is the emissions gap - **2,716,043** t CO₂e

How much the Action plan reduces - 2,526,437 t CO₂e

How much is left over - 1,105,833 t CO₂e

Commitments

Wroclaw's goal is to reduce greenhouse gas emissions by 80% by 2030, relative to a baseline of 2022.

In Wroclaw, the key activities are in the areas of:

- electricity and heat production**
- renovation of buildings**
- transportation**

Additional activities include climate change adaptation and municipal buildings decarbonization

