

# INTERNATIONALIZATION DAYS

Wrocław | April 20–22, 2026

## WELCOME DAY

Monday, April 20

TIME	SESSION	DESCRIPTION	LOCATION
09:00–18:00	WP6 Representatives' arrival in Wrocław		
17:30	Meeting up at the Town Hall		<u>Rynek, 50-116</u> <u>Wrocław</u>
18:00–20:00	Dinner at Restaurant DWÓR POLSKI		<u>Rynek 5, 50-106</u> <u>Wrocław</u>

## DAY 1

**Tuesday, April 21**

TIME	SESSION	DESCRIPTION	LOCATION
09:00–09:15	Registration of participants		<p><u>Centre for Teaching and Research,</u> <u>Grunwaldzki Sq.</u> <u>24, Room III C</u></p>
09:15–09:30	Group photo		
09:30–09:45	Welcome speech and greetings by Prof. Szymon Szewrański, Vice-Rector for External Affairs		
09:45–10:00	Introducing the meeting agenda	Chair: Vagia Niki Stergioula (UNIPR)	
10:00–10:30	Legal Frameworks & Mobility Protocols - Mobility Protocol review (EACEA feedback)	Multilateral inter-institutional agreement; strategic framework refinement; planning and evaluation mechanisms Chair: Kia Kimhag (HiG)	

TIME	SESSION	DESCRIPTION	LOCATION
10:30–11:30	Mobility Challenges	Limited mid/long-term uptake; strengthen incentives; improve recognition; regulatory updates; promotion of virtual/blended mobility; enhancing the SMS mobility slots Chair: David Castor Plasencia Fragoso (UEX)	<p><u>Centre for Teaching and Research,</u> <u>Grunwaldzki Sq. 24, Room III C</u></p>
11:30–11:45	Coffee break		
11:45–12:15	Job-shadowing & Staff Training	Chair: Uwe Genetzke (OvGU)	
12:15–12:45	Joint information package for intra-alliance mobility	Chair: Uwe Genetzke (OvGU)	
12:45–13:15	Relaunch of the Erasmus coordinators forum	Chair: Kia Kimhag (HiG)	

TIME	SESSION	DESCRIPTION	LOCATION
13:15-13:30	Mobility Tracker & Virtual International Office	Chair: Alessandro Bernazzoli (UNIPR)	<p><u>Centre for Teaching and Research,</u> <u>Grunwaldzki Sq. 24, Room III C</u></p>
13:30-14:30	Lunch		
14:30-15:00	Financial status	Chair: Alessandro Bernazzoli (UNIPR)	
15:00-15:30	Training opportunities and courses	Chair: Elisa Pelizzari (UNIPR)	
15:30-16:00	Wrap up Session	Chair: Vagia Niki Stergioula (UNIPR)	
16:00-19:00	Free time		
19:00	Dinner at Art Hotel Restaurant		<p><u>Restaurant ART:</u> <u>Kiełbaśnicza 20,</u> <u>50-110 Wrocław</u></p>

## DAY 2

### Wednesday, April 22

TIME	SESSION	DESCRIPTION	LOCATION
09:00–10:00	BIPs – promotion procedures (staff and students) for Erasmus+ offices	BIP slots allocation; BIP Joint Commission update Chair: Anna Posadowska-Malarz (UPWr)	<p><u>Centre for Teaching and Research,</u> <u>Grunwaldzki Sq. 24, Room III C</u></p>
10:00–10:30	Internship Platform pilot launch	Chair: Alessandro Bernazzoli (UNIPR)	
10:30–11:00	Dissemination and Communication activities to foster mobilities	Chair: Elise Pinault, Claire Charpentier (UA)	
11:00–11:15	Coffee break		
11:15–11:45	NAFSA 2026 – EAIE 2026	Chair: Krzysztof Kafarski (UPWr)	

TIME	SESSION	DESCRIPTION	LOCATION
11:45–12:15	MOOC “The Value(s) of the European Union” implementation; micro-credential recognition across partners	Chair: Alessandro Bernazzoli (UNIPR)	<p><u>Centre for Teaching and Research,</u> <u>Grunwaldzki Sq. 24, Room III C</u></p>
12:15–13:00	International collaboration protocol	Chair: Alessandro Bernazzoli (UNIPR)	
13:00–13:30	Evaluation & Action Plan - SWOT analysis	Chair: Alessandro Bernazzoli (UNIPR)	
13:30–14:30	Lunch		

TIME	SESSION	DESCRIPTION	LOCATION
14:30–15:30	Wrap up & planning the next physical WP6 meeting in Extremadura and Evora	Chair: David Castor Plasencia Fragoso (UEX), Marina Cordeiro (UÉ)	<u>Centre for Teaching and Research, Grunwaldzki Sq. 24, Room III C</u>
15:30–16:00	EU GREEN 2 – presentation of the future structure	Chair: Krzysztof Kafarski (UPWr), Alessandro Bernazzoli (UNIPR)	
16:00–19:00	Free Time		
19:00	Dinner in town optional (own cost) Optionally for those who want we can book a restaurant and go together		

## Here are some reliable and popular ways to get from Wrocław–Copernicus Airport (WRO) to the city centre (about 10 km away):

### Public Bus – cheapest option

#### City bus line 106

- runs regularly during the day and goes to Wrocław Główny (main railway station) and central stops (e.g., Renoma, Plac Dominikański)
- journey takes about 35–50 min depending on traffic
- a single ticket costs around 4.60 PLN for up to 75 min of travel
- tickets can be bought at machines at the airport stop or via the JakDojade mobile app

#### Night bus line 206

- runs during late night/early morning hours when 106 isn't operating
- same ticket prices as daytime buses

Pros: very cheap, works every day, good for budget travellers

Cons: slower and baggage can be tricky if it's very crowded

### Taxi – direct and convenient

- official taxi stands are located right outside the arrivals area
- typical fare to the city centre is roughly 90–130 PLN (day) with possible night surcharge
- ride takes 20–30 min depending on traffic

Pros: direct door-to-door ride, especially good with luggage or late arrivals

Cons: most expensive option. Some taxis 'waiting' at the airport can be pricier than meter-based fares, so watch out

## HOTELS

### More comfortable | highly rated

- Hotel Mercure Wrocław Centrum – 4★ hotel in the city center, highly rated by guests
- Radisson Blu Hotel, Wrocław – prestigious 4★ hotel, central location
- PURO Wrocław Stare Miasto – stylish hotel in the historic part of the city
- The Bridge Wrocław - MGallery – luxury boutique hotel
- Novotel Wrocław Centrum – 4★ hotel, frequently chosen by travelers

### Mid-range | good value for money

- B&B HOTEL Wrocław Centrum – affordable price, good location
- Hotel HP Park Plaza – solid 3–4★ hotel, close to public transport
- Art Hotel Wrocław – elegant 3★ hotel in the city center
- Ibis Wrocław Centrum – popular chain hotel, simple and functional
- Qubus Hotel Wrocław – good hotel with moderate rates

### Budget | economy options

- Traffic Hotel Wrocław – more affordable option in the city center
- Campanile Wrocław Centrum – budget-friendly hotel nearby
- Hotel ZOO Wrocław – affordable hotel with positive reviews
- Green Hostel Wrocław and Dizzy Daisy Hostel Wrocław – hostel-style options/more budget-oriented than traditional hotels

## HOW TO GET...



### The building where we will be working:

Centre for Teaching and Research, Grunwaldzki sq. 24

### Bus/tram stop:

Grunwaldzki Square

### Tram lines:

0, 1, 2, 4, 10, 12, 13, 16, 19

### Bus lines:

111, 115, 116, 121, 131, 145, 146, 149, 151, 315, D

Public transport tickets can be purchased using a credit or debit card directly from a machine on the tram or bus. Please note - if you buy your ticket directly from the machine on the tram or bus, the ticket is encoded on your card, the ticket will not be printed out.

Public transport tickets can also be purchased from ticket machines at most bus/tram stops - tickets from the ticket machines are printed, they must be validated when you board the vehicle. More information how and where to buy public transport tickets in Wrocław: [Public transport. Guide.](#)

The application “Jakdojade” – [link to the app](#); The application is a very useful application for all public transport passengers in Polish cities. Thanks to the app, you can easily check the timetable, buy a ticket and plan your journey including transfers – the app will do this for you, you just need to enter your place of departure and destination and the app will show you all the possible (or most of) the ways to get to that place.

## Available tickets

### Single tickets:

Single ticket for normal and suburban lines – ticket holder is entitled to one trip using the vehicle on which the ticket was validated, on normal and suburban lines.

Single ticket for fast and night lines – ticket holder is entitled to one trip using the vehicle on which the ticket was validated, on fast and night lines.

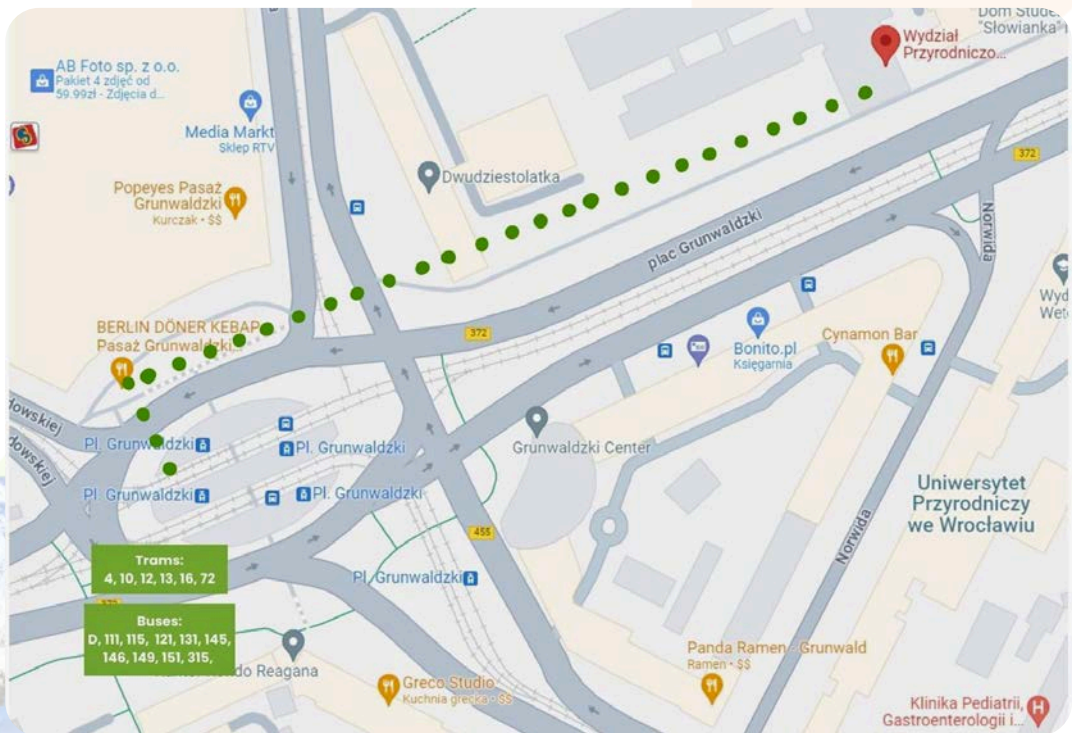
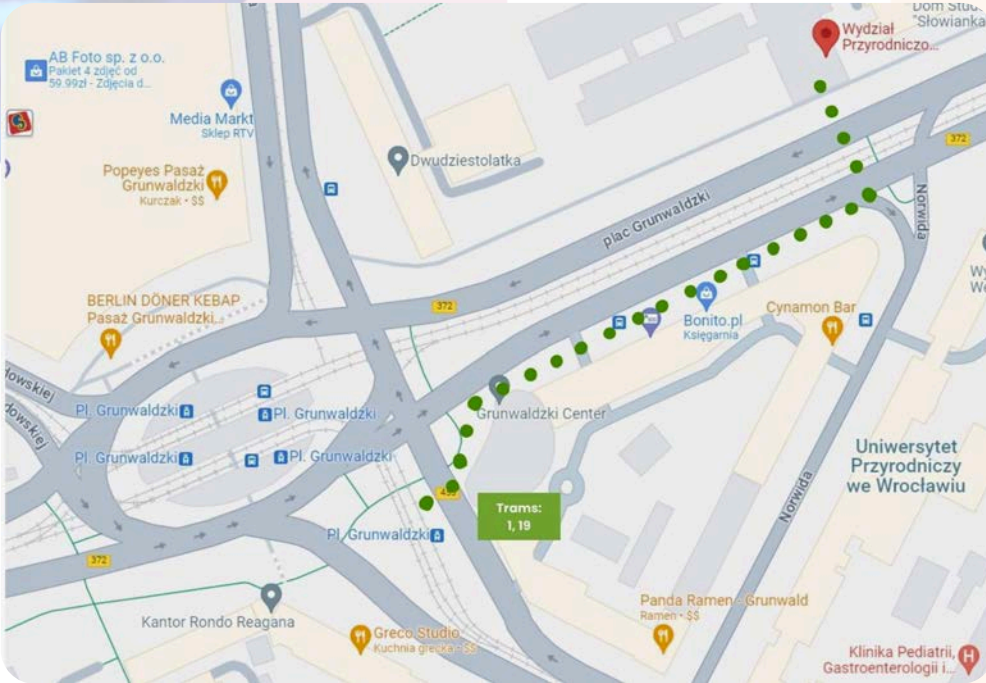
### Short-term tickets:

The ticket holder is entitled to an unlimited number of journeys on all lines for the time specified on the ticket starting from validation time.

## Taxi

- iTaxi – [mobile app](#)
- Opti Taxi – [mobile app for Androids](#), [mobile app for iOS](#)
- Uber – [mobile app for Androids](#), [mobile app for iOS](#)
- Bolt – [mobile app](#)

The maps below show how to get from the tram/bus stops to the building where we will be working:



# TOURISTIC ATTRACTIONS

# recommendations



# ZOOLOGICAL GARDEN



source: Zoo Wrocław

The Wrocław Zoological Garden is the oldest zoo in Poland, having been first launched in 1865 as the Breslau Zoological Garden while the city was part of Prussia. After World War II, it was rebuilt and ultimately opened in 1948 and now it is also the largest (in terms of the number of animals/species) zoo in the country. The zoo covers 33 hectares (82 acres) near downtown Wrocław. It is home to about 10,500 animals representing about 1,132 species. In terms of the number of animal species it is the third largest zoological garden in the world. The Wrocław Zoo is the most visited zoo in Poland and the fifth most visited zoo in Europe (source: Wikipedia-[https://en.wikipedia.org/wiki/Wroc%C5%82aw\\_Zoo](https://en.wikipedia.org/wiki/Wroc%C5%82aw_Zoo)).

**As the Wrocław University of Environmental and Life Sciences we closely cooperate with the Zoo in terms of veterinary research.**

It is especially worth visiting the Zoo cause of Afrykarium (the word created from Polish words Afryka-Africa and akwarium- aquarium). It is the biggest oceanarium in Poland, dedicated solely to the African fauna. It is the first oceanarium in Poland and the only one in the world devoted to the fauna and flora of Africa. Afrykarium made the Wrocław zoo the biggest tourist attraction in Poland (source: <https://zoo.wroclaw.pl/en/afrykarium/>).

opening hours: Monday-Thursday: 9 am-4 pm; weekend: 9 am-5 pm  
tickets: 69 PLN (online in advance), 99 PLN (at the ticket office)  
website: <https://zoo.wroclaw.pl/en/>

# PANORAMA OF THE BATTLE OF RACŁAWICE



author: Vantime/source: pl.fotolia.com

If you want to take a museum tour in Wrocław, choose the exceptional one- Panorama of the Battle of Racławice Museum. It is the museum with only one painting, so we hope to encourage you to check it, its story and its author.

opening hours: everyday 8:30 am–7 pm

tickets: 50 PLN

website: <https://mnwr.pl/en/category/branches/panorama-of-the-battle-of-raclawice/>

# CENTENNIAL HALL

It is the the UNESCO-listed building, created between 1911 and 1913. It was built to commemorate the centenary of the 'Battle of the Nations' at Leipzig (1813) and also to serve as the centre of the great Centenary Exhibition. The city provided an excellent site for this purpose at the edge of Szczytnicki Park, on the site of a horse racing track that was open until 1907. Already at the time of its construction, Centennial Hall was a unique structure, with a reinforced concrete cover with the largest span in the world. The hall is 42 metres high, with the 67 metres in diameter dome covering it.

## Multimedia Fountain

In the direct neighborhood the Multimedia Fountain is located. The Wrocław's Multimedia Fountain is the biggest in Poland and one of the biggest in Europe. Its grand opening took place on 4 June 2009 on the occasion of the twentieth anniversary of free elections in post-war Poland. It had been a gift for the citizens of the city.

Today it is one of the most important attractions, constantly attracting tourists from Poland and from abroad. The structure occupies an area close to 1 hectare, with light points, 300 water jets and 3 fire jets placed at the bottom. This natural element! Water shows are accompanied by classical, contemporary, pop and ambient music (source: <https://halastulecia.pl/en/sightseeing/multimedia-fountain/>).

opening hours: <https://halastulecia.pl/en/sightseeing/multimedia-fountain/>  
tickets: free entrance



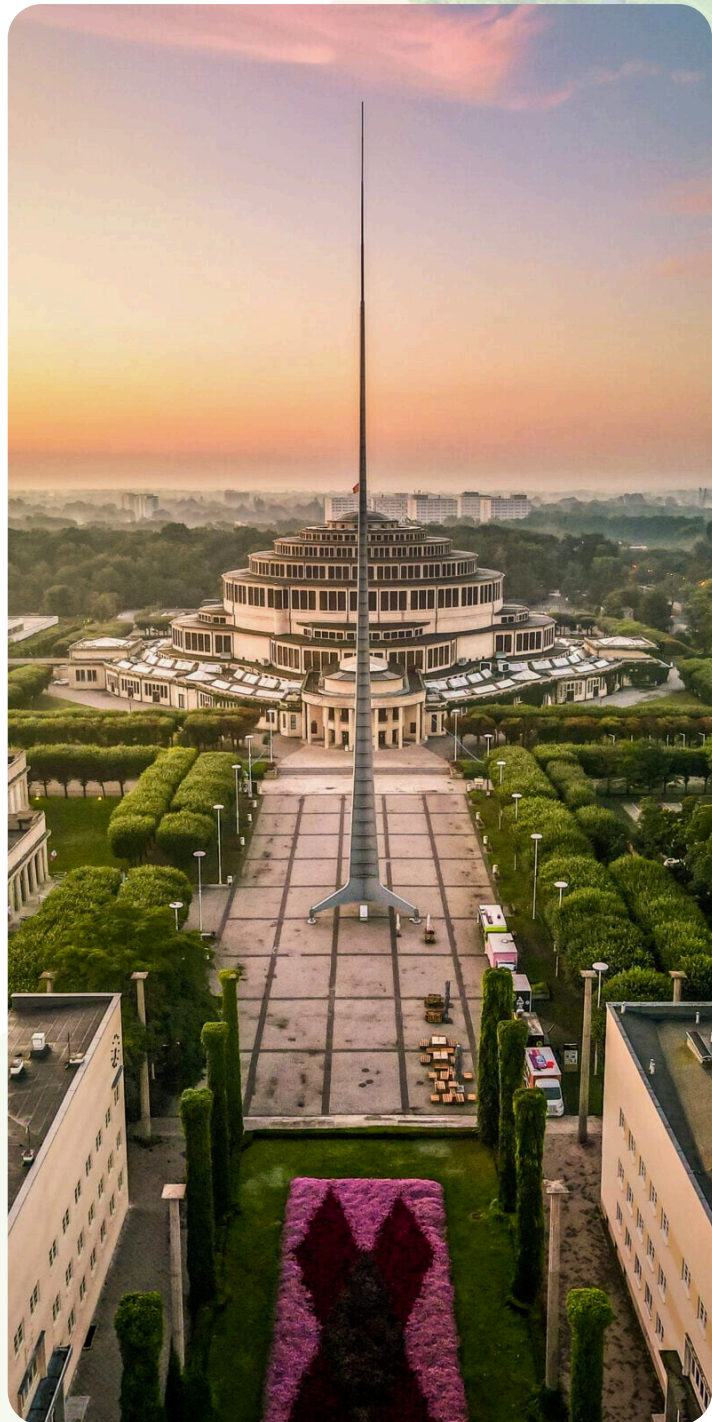
source: <https://www.polska.travel/hala-stulecia-we-wroclawiu/>

## IGLICA

It is a forty-ton structure erected in 1948 on the occasion of the Regained Territories Exhibition. It was to show the efforts of the citizens of Wrocław to rebuild the city destroyed by World War II and Festung Breslau. Hence the three legs of the base, representing the united social classes – workers, peasants and the so-called working intelligentsia, in the struggle for the common national good.

Originally, at the very top of the building (...) there was a mirror-like structure resembling a plume. However, the creative design, designed to reflect the floodlights around Iglica, turned out to be a dud. Just before the official presentation of the object, a huge storm passed over Wrocław, which did not spare the mirrored structure. The remains of the aluminium mirrors had to be dismantled. This difficult mission was undertaken by two students – Wojciech Niedziątek and Zbigniew Jaworowski, whose climb to the very top of Iglica and removal of the mirror elements took more than 24 hours.

Iglica, still with its plume, measured 106 metres. In the 1960s, the rusty peak was cut off and thus reduced to 96 metres. A decade later, during the next conservation, another 5 metres of Iglica were probably damaged and removed, which was found out during the renovation carried out in 2016, when the height of the object was re-measured. Today Iglica measures 90 metres and 30 centimetres in height. (source: <https://halastulecia.pl/en/sightseeing/iglica/>).



source: Sawicki Drone Shots (Krzysztof Sawicki)

# FOUR DOMES PAVILION MUSEUM OF CONTEMPORARY ART, BRANCH OF THE NATIONAL MUSEUM IN WROCLAW



source: <https://investmap.pl/inwestycja/wroclaw-pawilon-czterech-kopul-remont,4693.html>

Geometry, symmetry axis and order. Neighbouring the Centennial Hall, the Four Domes Pavilion is an innovative work of the architect Hans Poelzig, which was built between 1912 and 1913. Until 1945, the modernist building served as a venue for exhibitions and special events, and from 1953 it became the seat of the Wrocław Feature Film Studio. Here the cult films were shot, such as: "Sami swoi" by Sylwester Chęciński or "Popiół i diament" by Andrzej Wajda.

In the following years the Pavilion was handed over to the National Museum, which carried out its thorough revitalisation. The space was divided into an eastern wing with an external courtyard, where the “Collection of Polish Art of the 2nd half of the 20th and 21st Century” is now presented, and a western wing for temporary exhibitions. The place regained its pulse and became the heart of contemporary art. In the renovated, modernist building the layout of the permanent exhibition has been arranged chronologically.

The collection of the Museum of Modern Art includes works by Polish contemporary art creators from the 2nd half of the 20th and 21st century, including Tadeusz Kantor, Zdzisław Beksiński, Alina Szapocznikow, and the largest collection of works by the Polish sculptor, Magdalena Abakanowicz (source: <https://halastulecia.pl/en/sightseeing/four-domes-pavilion/>).



source: <https://edd.nid.pl/wp-content/uploads/2016/07/fot-w-rogowicz.jpg>

opening hours:

Monday: closed

Tuesday–Thursday: 10 am–5 pm

Friday: 10 am–7 pm

Saturday: 10 am–8 pm

Sunday: 10 am–6 pm

tickets: with Panorama Racławicka ticket – the permanent exhibition is for free

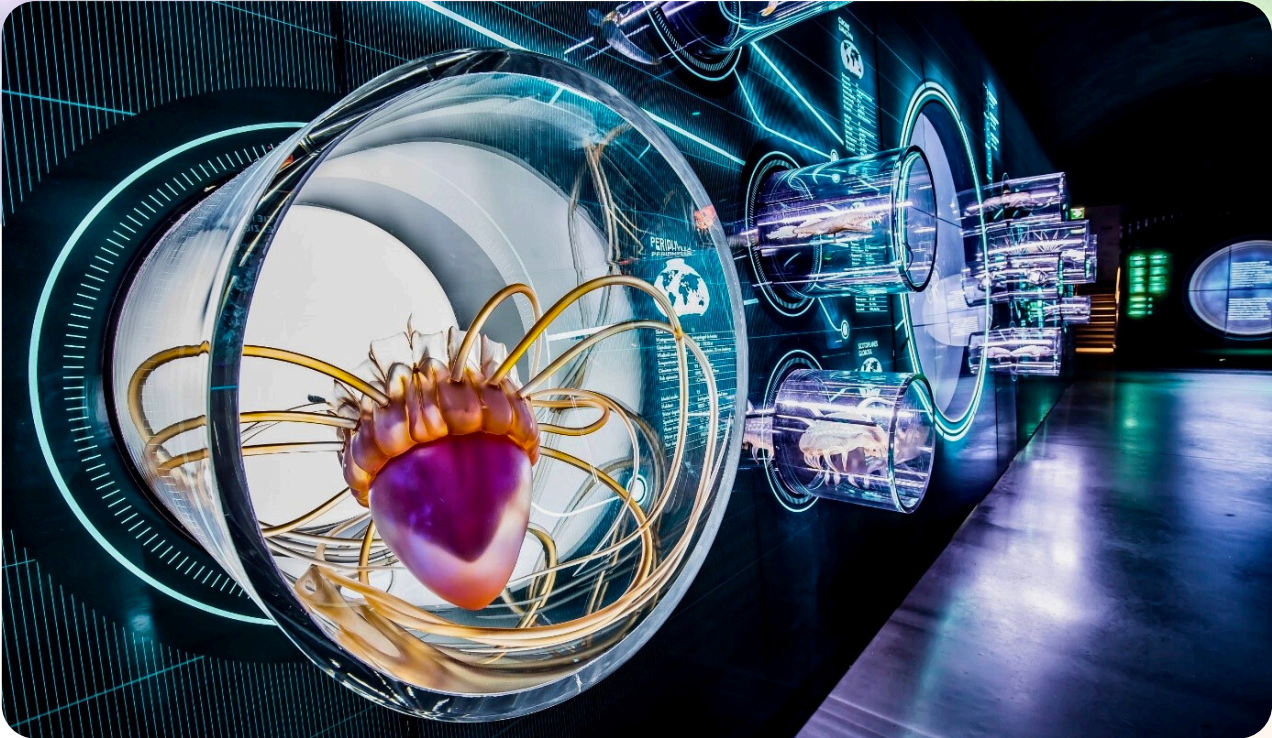
permanent exhibition: 20 PLN

temporary exhibition: 35 PLN

permanent and temporary exhibitions: 45 PLN

website: <https://mnwr.pl/en/category/branches/the-four-domes-pavilion/>

# HYDROPOLIS



source: <https://hydropolis.pl/hydropolis-zaprasza/i>

It is a unique knowledge water centre combining educational values with modern forms of exhibition. Hydropolis is also an exceptional example of revitalization of a post-industrial facility. The exhibition devoted to water is located in a 19th century underground clean water reservoir (source: <https://hydropolis.pl/en/about-mpwik/>).

The centre explores the processes in which water is involved – from its functions in the human body to the ocean currents that shape the Earth's climate.

opening hours: Monday-Thursday: 9 am-6 pm (last entry at 5 pm);  
weekend: 9 am-7 pm (last entry at 6 pm)

tickets: 45 PLN



## POLINKA CABLE CAR



source: <https://urbnews.pl/kolejka-linowa-miasto/polinka/>

Polinka is the cable car of Wrocław University of Science and Technology. Launched on October 1, 2013, it connects the Main University Campus with the Na Grobli Campus located on the other side of the Odra river.

Currently, there are two carriages running over the river Odra. It takes its passengers less than three minutes to get from one bank to the other.

Polinka was built with students, doctoral students, and staff of Wrocław University of Science and Technology in mind, but it very quickly became one of Wrocław's tourist attractions.

## KSIĄŻ CASTLE

Książ Castle is a huge architectural complex on a scale unique in Europe, situated on a rocky promontory deep in the forest. By virtue of its rich history and remarkable size, the building has been entered on the list of historic sites recognized by the National Heritage Institute, is found on the Piast Castles Trail, and to this day is an essential testimony to the events of the past. As a residential complex, Książ is recognized as the third-largest castle in Poland and the largest in Lower Silesia (source: [https://www.ksiaz.walbrzych.pl/en/turystyka/o\\_nas#ksiaz-castle](https://www.ksiaz.walbrzych.pl/en/turystyka/o_nas#ksiaz-castle)).

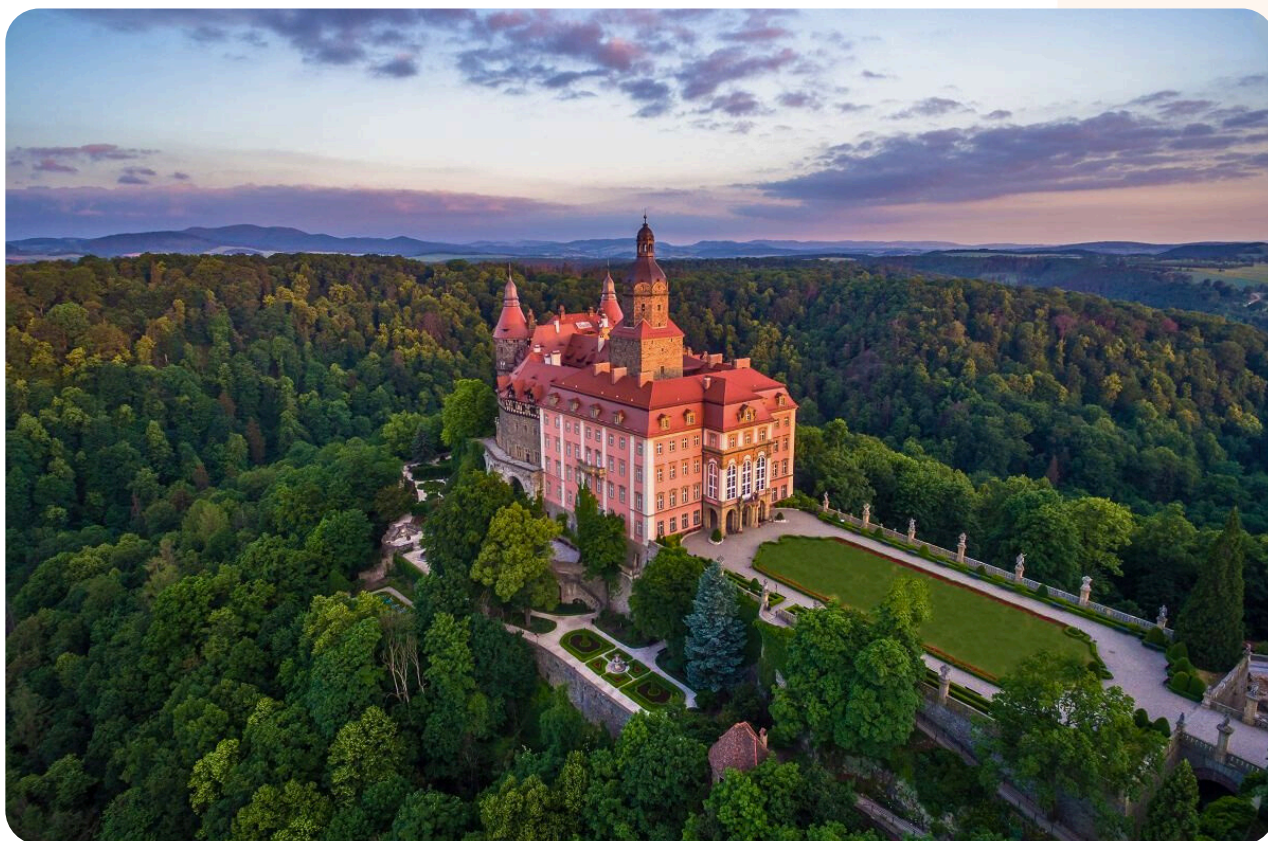
opening hours: Monday–Friday: 9 am–6 pm

weekend: 9 am–7 pm

tickets: from 59 PLN to 89 PLN

<https://www.ksiaz.walbrzych.pl/en/turystyka/zwiedzanie/dzienne>

OUT OF WROCLAW



source: Książ Castle (fot. press materials Książ Castle)

# LIVE MUSEUM OF POTTERY IN BOLESŁAWIEC

OUT OF WROCLAW



source: <https://ceramiczna-przygoda.pl/zywe-muzeum-ceramiki-co-to-takiego/>

## A city of good pitchers

It was as early as in 1380 when pottery manufacturing was present in Bolesławiec. Its advantageous geographic location at the crossroads of trade routes and exceptional raw material resources (rich deposits of heat resistant clay as well as clays belonging to the group of natural glazes) made this field of industry the driving force of the development of the city which soon became to be known as the city of good pitchers. Those traditions have not been lost and Bolesławiec is still a place that is built on pottery. Just like on old postcards (source: <https://ceramiczna-przygoda.pl/boleslawiec-en/>).

opening hours: 7 am-2 pm after previous booking: <https://ceramiczna-przygoda.pl/reservation/>

tickets: from 70 PLN to 300 PLN

website: <https://ceramiczna-przygoda.pl/live-museum-of-pottery/>